



Penstemon

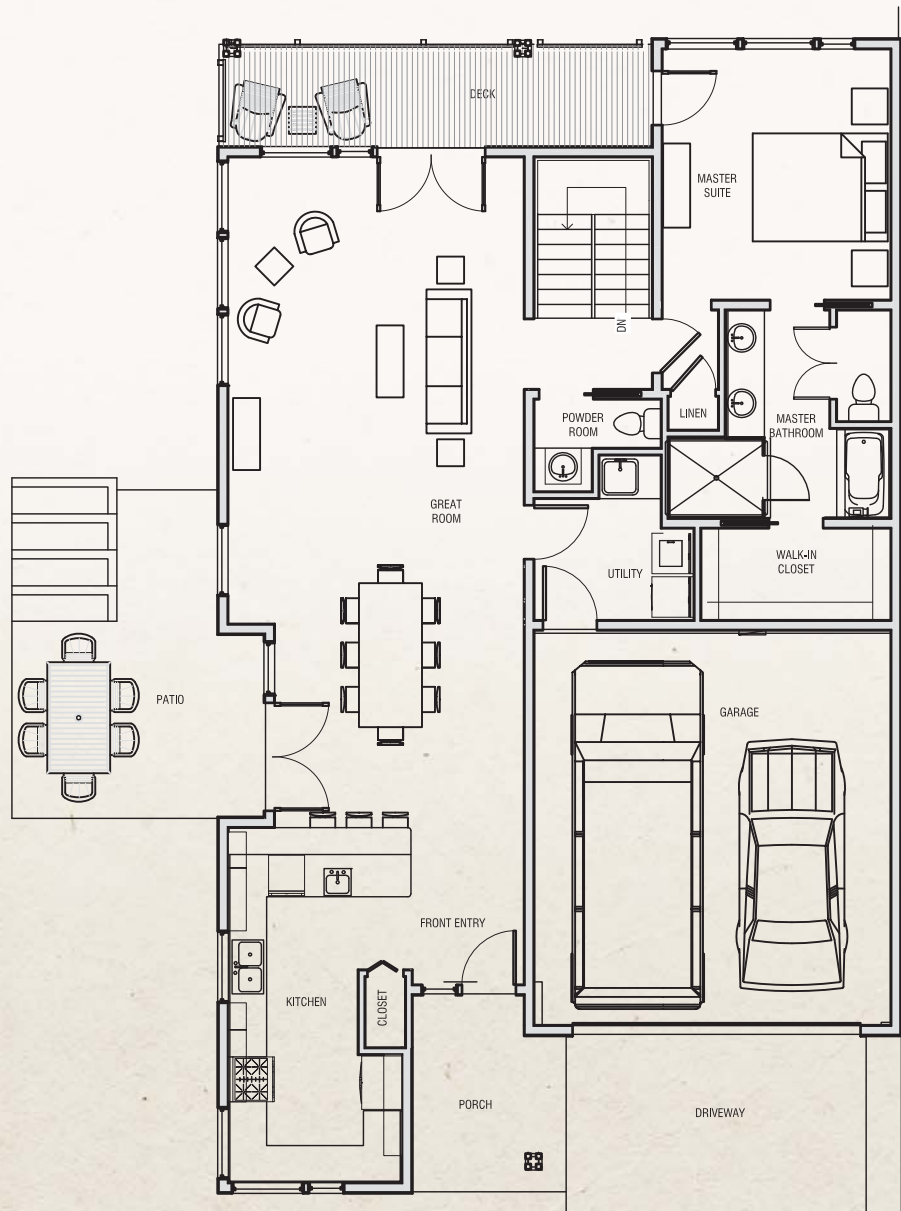
HOME PLANS & FEATURES

2/3 Bedroom, 2.5 Bath

Living Area: 2,668 Sq. Ft.



THE KNOLLS
AT HILLCREST



Main Floor Plan (See other side for Lower Level Plan)

Not to Scale

Live Connected. Live Well.

Corner of Highland Blvd & Knolls Drive
Bozeman, Montana 59718 406.522.7084



www.TheKnollsAtHillcrest.com



Penstemon

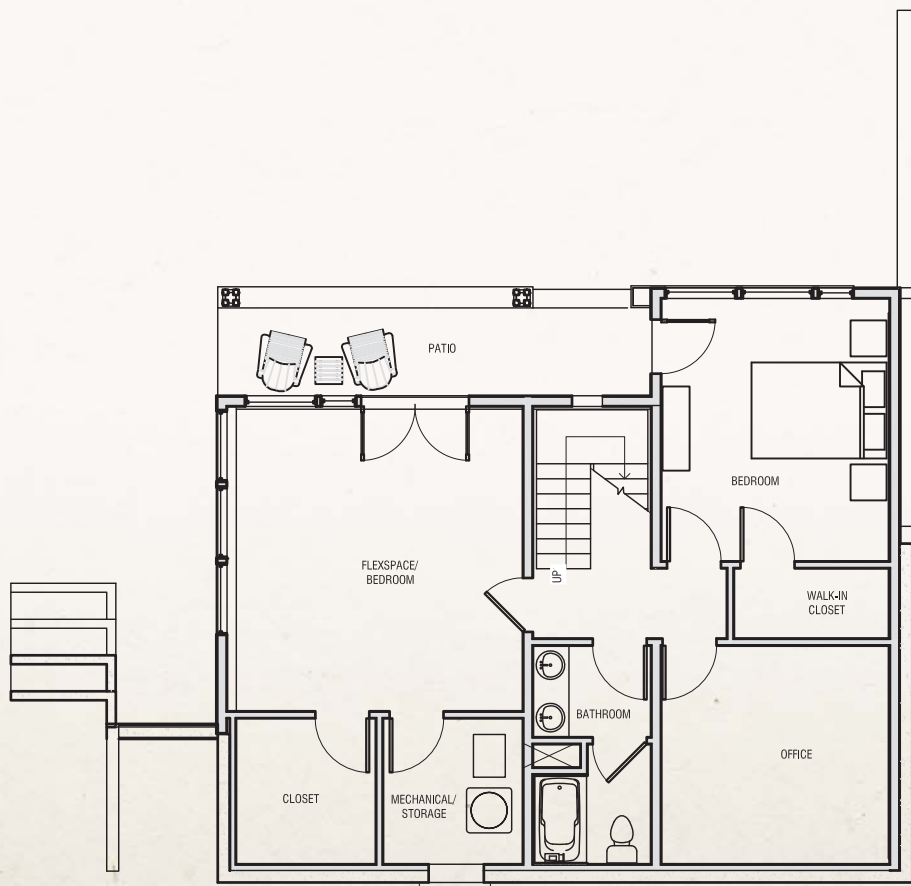
HOME PLANS & FEATURES

2/3 Bedroom, 2.5 Bath

Living Area: 2,668 Sq. Ft.



THE KNOLLS
AT HILLCREST



Lower Floor Plan (See other side for Main Level Plan)

Not to Scale

Live Connected. Live Well.

Corner of Highland Blvd & Knolls Drive
Bozeman, Montana 59718 406.522.7084



www.TheKnollsAtHillcrest.com