



# Comandra

HOME PLANS & FEATURES

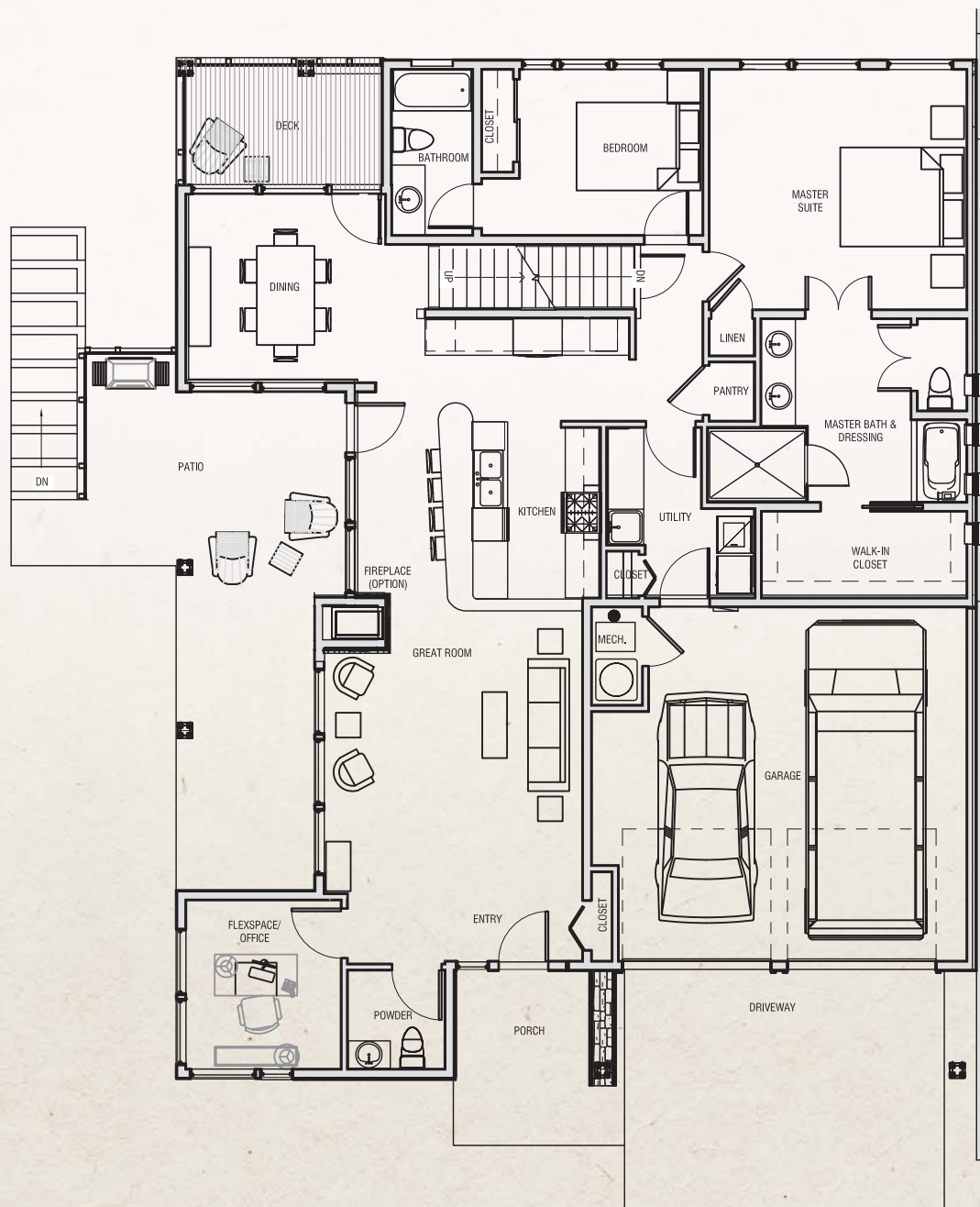
4/5 Bedroom, 3.5/4 Bath

Living Area: 3,524 or 3,848 Sq. Ft.



## THE KNOLLS

AT HILLCREST



**Main Floor Plan** (See other side for Lower Floor Plan / Loft Plan)

Not to Scale

Live Connected. Live Well.

Corner of Highland Blvd & Knolls Drive  
Bozeman, Montana 59718 406.522.7084



[www.TheKnollsAtHillcrest.com](http://www.TheKnollsAtHillcrest.com)

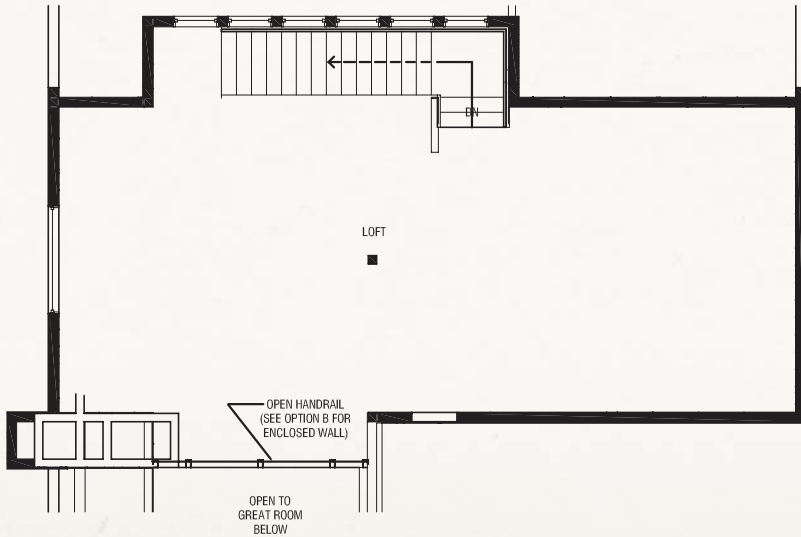


# Comandra

HOME PLANS & FEATURES

4/5 Bedroom, 3.5/4 Bath

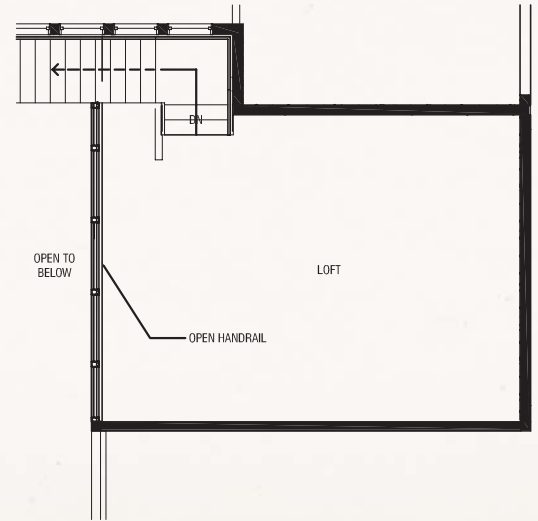
Living Area: 3,524 or 3,848 Sq. Ft.



## Upper Floor Plan "A"

(See other side for Main Floor Plan / Lower Floor Plan)

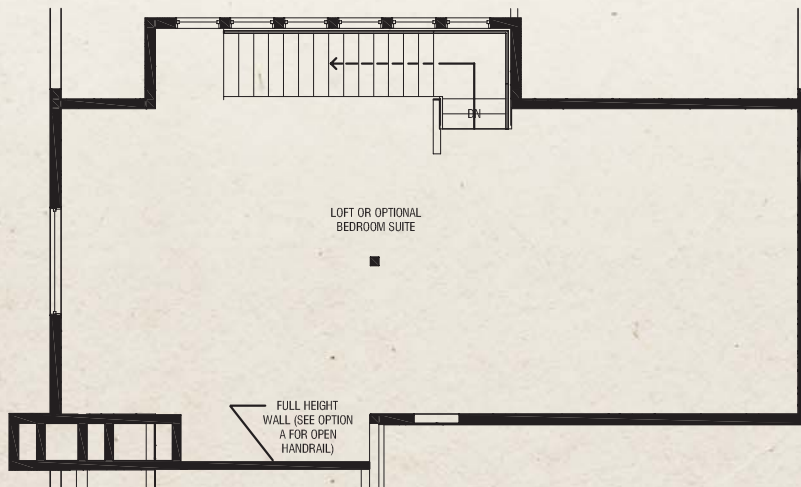
Not to Scale



## Upper Floor Plan "C"

(See other side for Main Floor Plan / Lower Floor Plan)

Not to Scale



## Upper Floor Plan "B"

(See other side for Main Floor Plan / Lower Floor Plan)

Not to Scale

Live Connected. Live Well.

Corner of Highland Blvd & Knolls Drive  
Bozeman, Montana 59718 406.522.7084



www.TheKnollsAtHillcrest.com



# Comandra

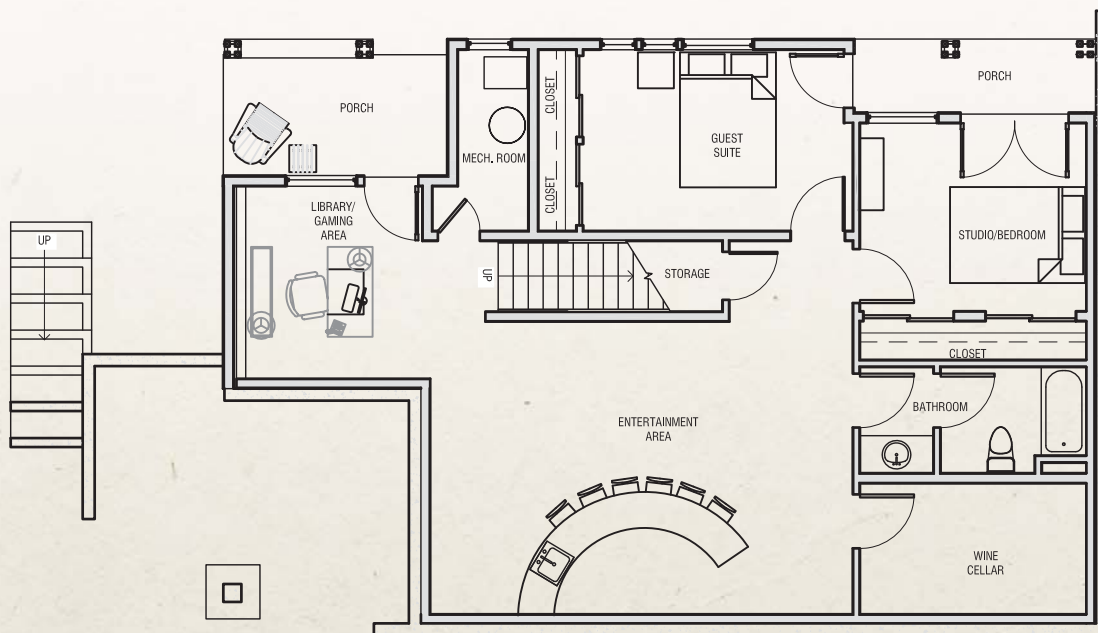
HOME PLANS & FEATURES

4/5 Bedroom, 3.5/4 Bath

Living Area: 3,524 or 3,848 Sq. Ft.



THE KNOLLS  
AT HILLCREST



**Lower Floor Plan** (See other side for Main Floor Plan / Loft Plan)

Not to Scale

Live Connected. Live Well.

Corner of Highland Blvd & Knolls Drive  
Bozeman, Montana 59718 406.522.7084



[www.TheKnollsAtHillcrest.com](http://www.TheKnollsAtHillcrest.com)