



# Campion

HOME PLANS & FEATURES

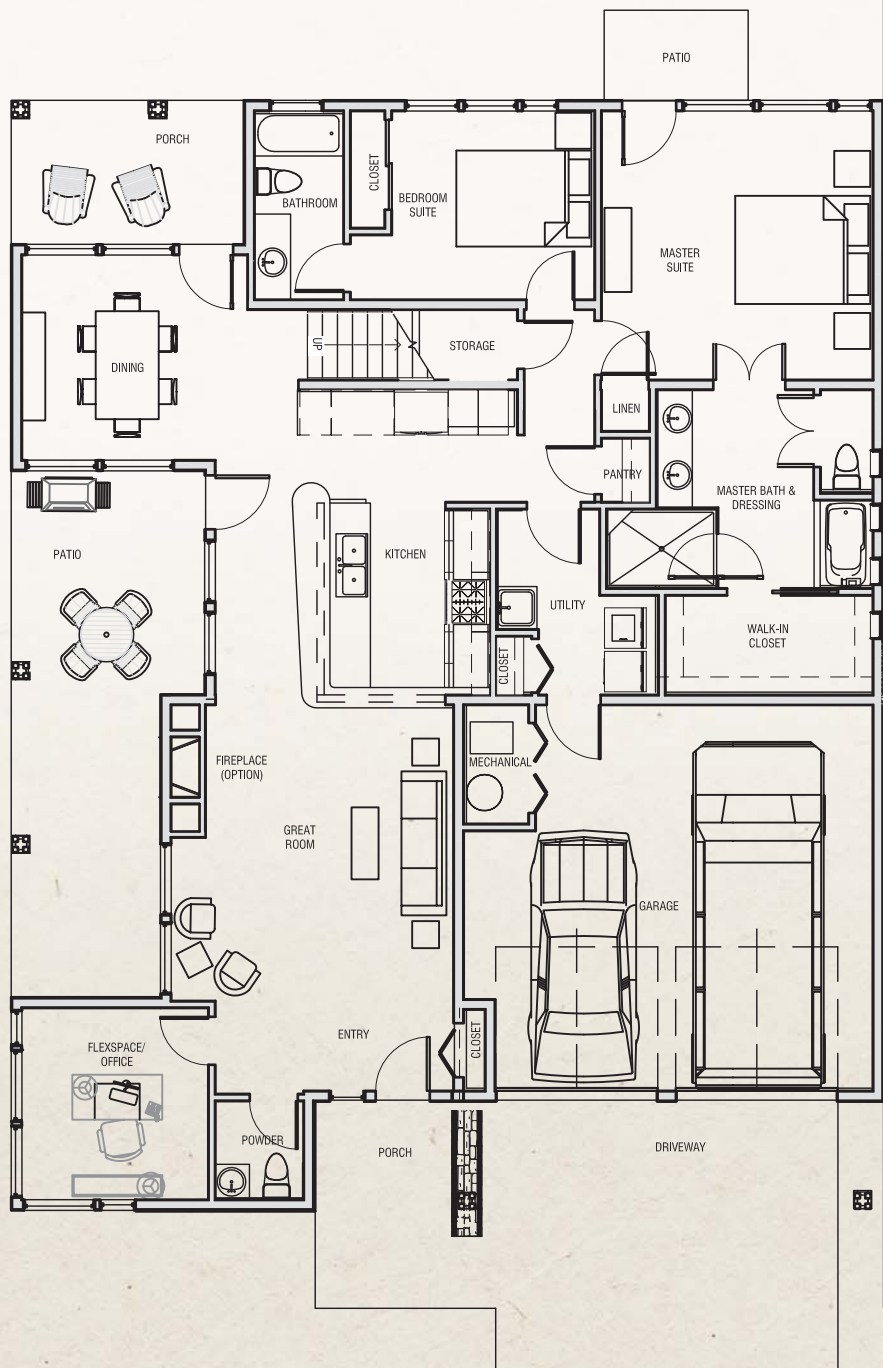
3/4 Bedroom, 2.5/3.5 Bath

Living Area: 2,250 or 2,574 Sq. Ft.



## THE KNOLLS

AT HILLCREST



**Main Level Floor Plan** (See other side for Loft Plans)

Not to Scale

Live Connected. Live Well.

Corner of Highland Blvd & Knolls Drive  
Bozeman, Montana 59718 406.522.7084



[www.TheKnollsAtHillcrest.com](http://www.TheKnollsAtHillcrest.com)



# Campion

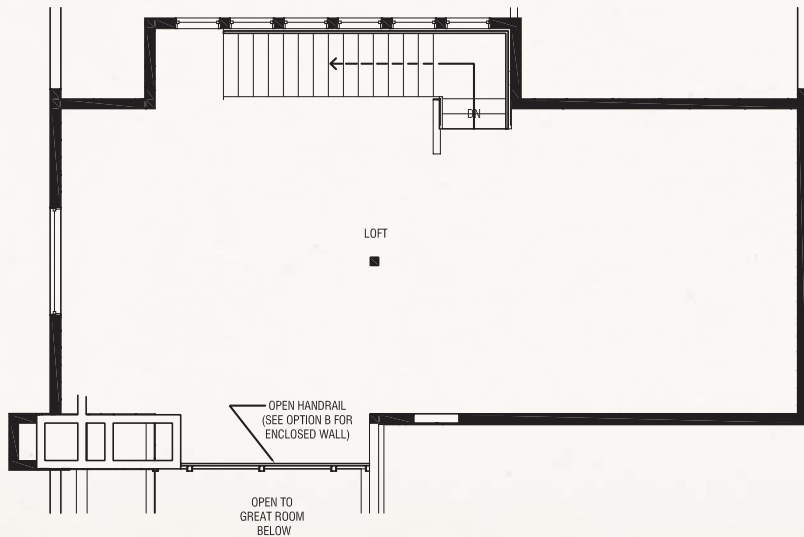
HOME PLANS & FEATURES

3/4 Bedroom, 2.5/3.5 Bath

Living Area: 2,250 or 2,574 Sq. Ft.



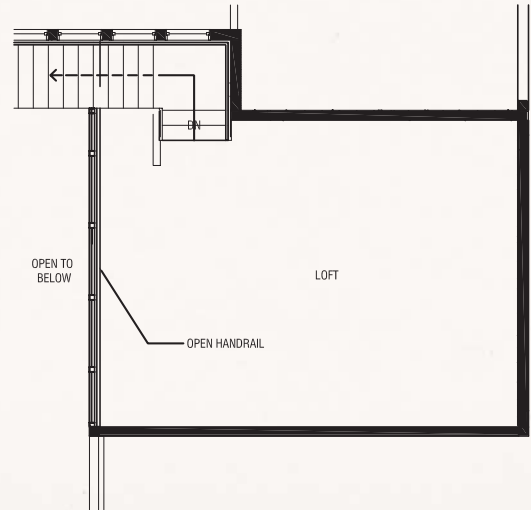
**THE KNOLLS**  
AT HILLCREST



## Upper Floor Plan "A"

(See other side for Main Floor Plan)

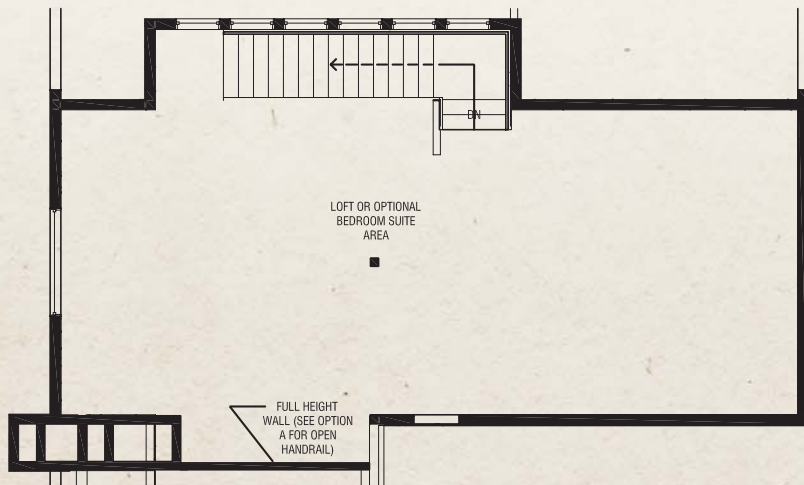
Not to Scale



## Upper Floor Plan "C"

(See other side for Main Floor Plan)

Not to Scale



## Upper Floor Plan "B"

(See other side for Main Floor Plan)

Not to Scale

Live Connected. Live Well.

Corner of Highland Blvd & Knolls Drive  
Bozeman, Montana 59718 406.522.7084



[www.TheKnollsAtHillcrest.com](http://www.TheKnollsAtHillcrest.com)